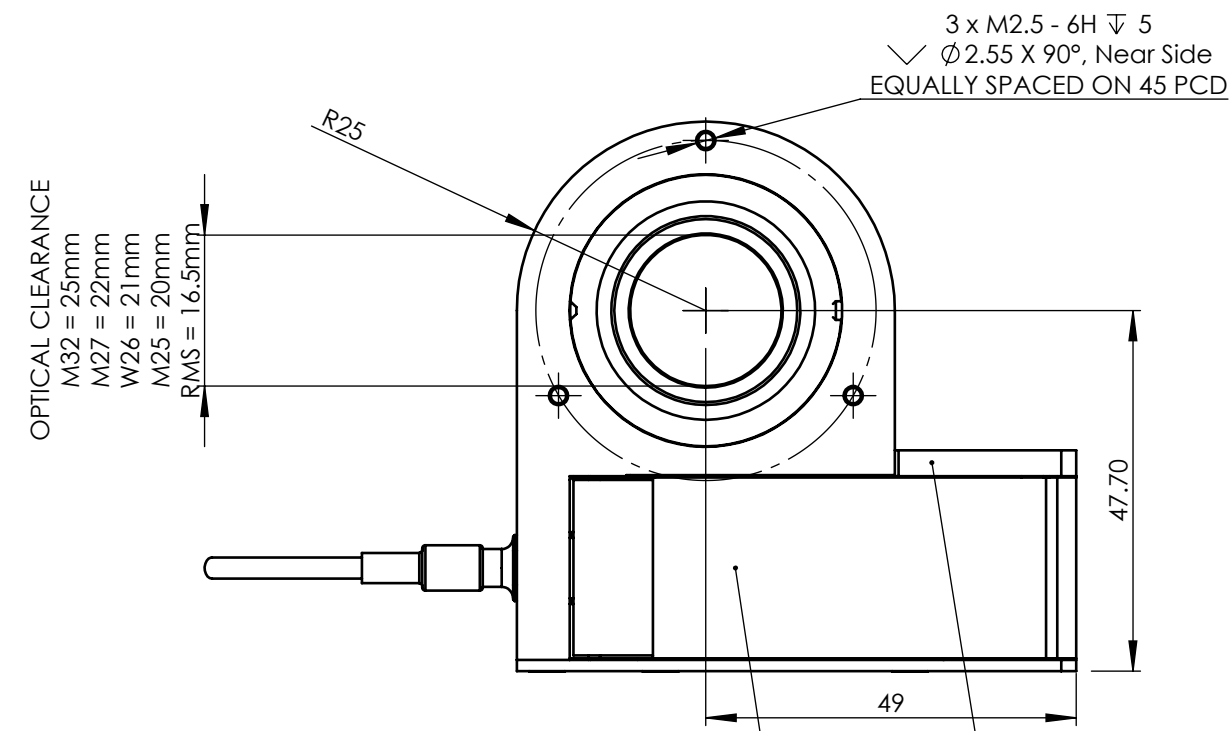
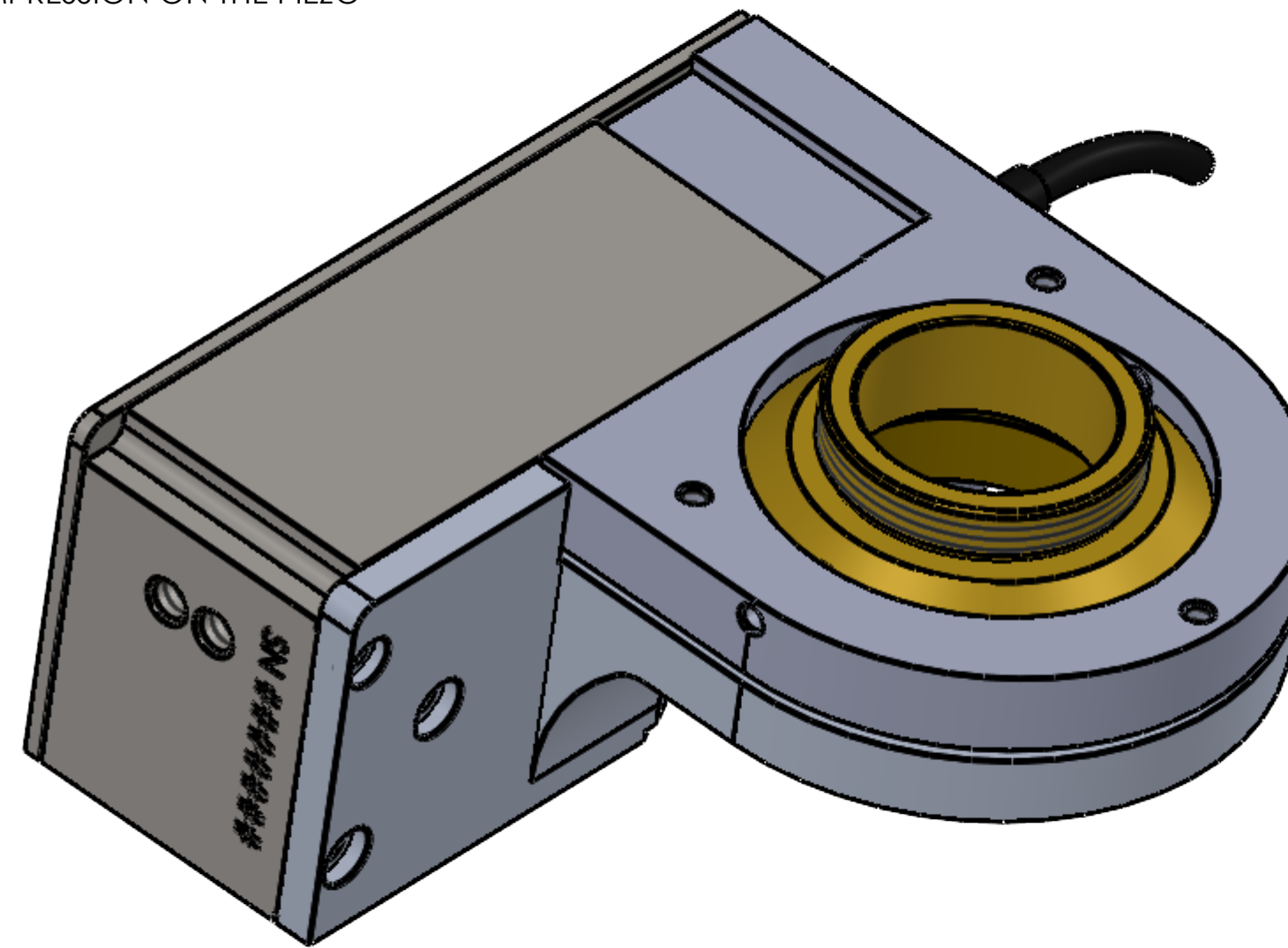


UPRIGHT (UP) MODEL IS DESIGNED TO WORK WITH THE OBJECTIVE ABOVE THE STAGE SO GRAVITY ACT IN COMPRESSION ON THE PIEZO OFTEN ON AN UPRIGHT MICROSCOPE



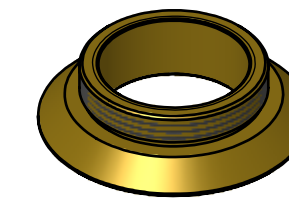
WHEN MOUNTING DIRECT ON THE 3 x M2.5 LEAVE >0.5 CLEARANCE ABOVE THIS FACE

WHEN MOUNTING DIRECT ON THE 3 x M2.5 LEAVE >0.5 CLEARANCE ABOVE THIS FACE

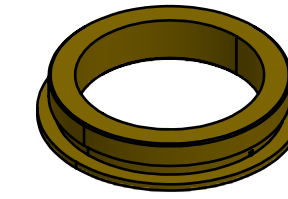


ADAPTERS AND ACCESSORIES

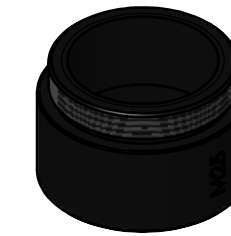
(SOLD SEPARATLY NOT SHOWN TO SCALE)



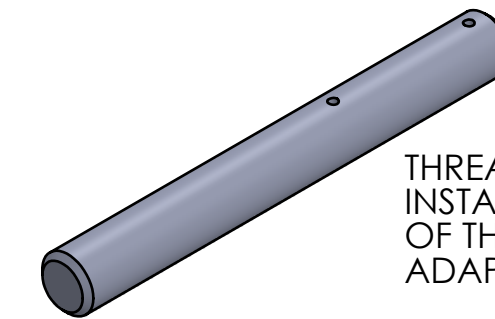
MICROSCOPE THREAD ADAPTER. SELECT APPROPRIATE THREAD TO MATCH MICROSCOPE RMS, M25, W26, M27 OR M32



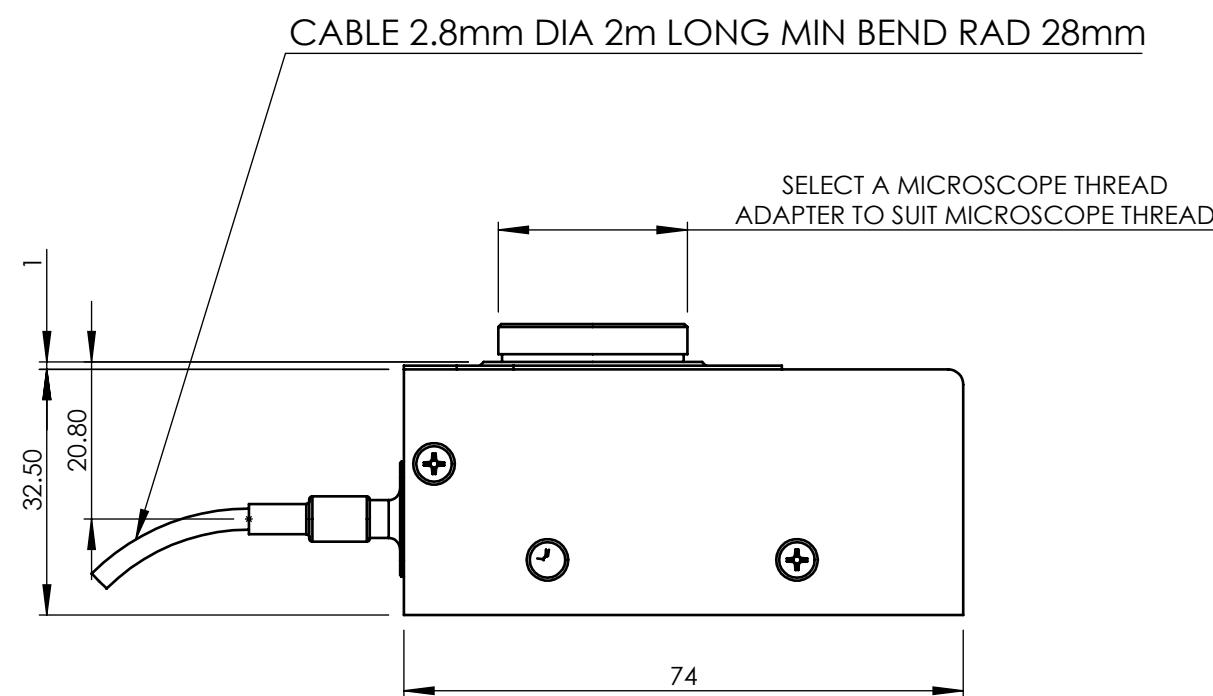
OBJECTIVE THREAD ADAPTER. SELECT APPROPRIATE THREAD TO MATCH OBJECTIVE RMS, M25, W26 OR M27. NOT REQUIRED FOR M32 SYSTEMS.



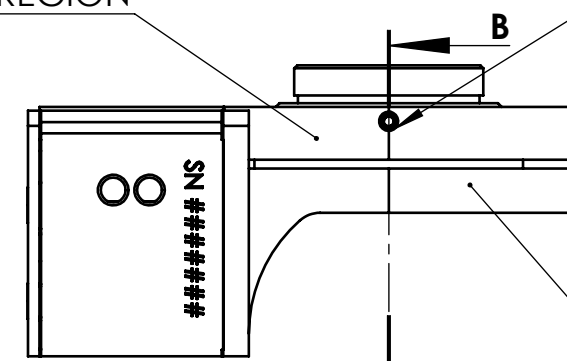
PARAFOCAL SPACERS FOR MOVING OTHER OBJECTIVES IN MICROSCOPE NOSE TO THE SAME FOCAL HEIGHT RMS, M25, W26, M27 OR M32. 13mm LONG EXCEPT M32 WHICH IS 12mm.



THREAD ADAPTER KEY CAN AID INSTALLATION AND REMOVAL OF THREAD ADAPTERS LIGHTLY NIP UP ADAPTERS ON INSTALLATION.

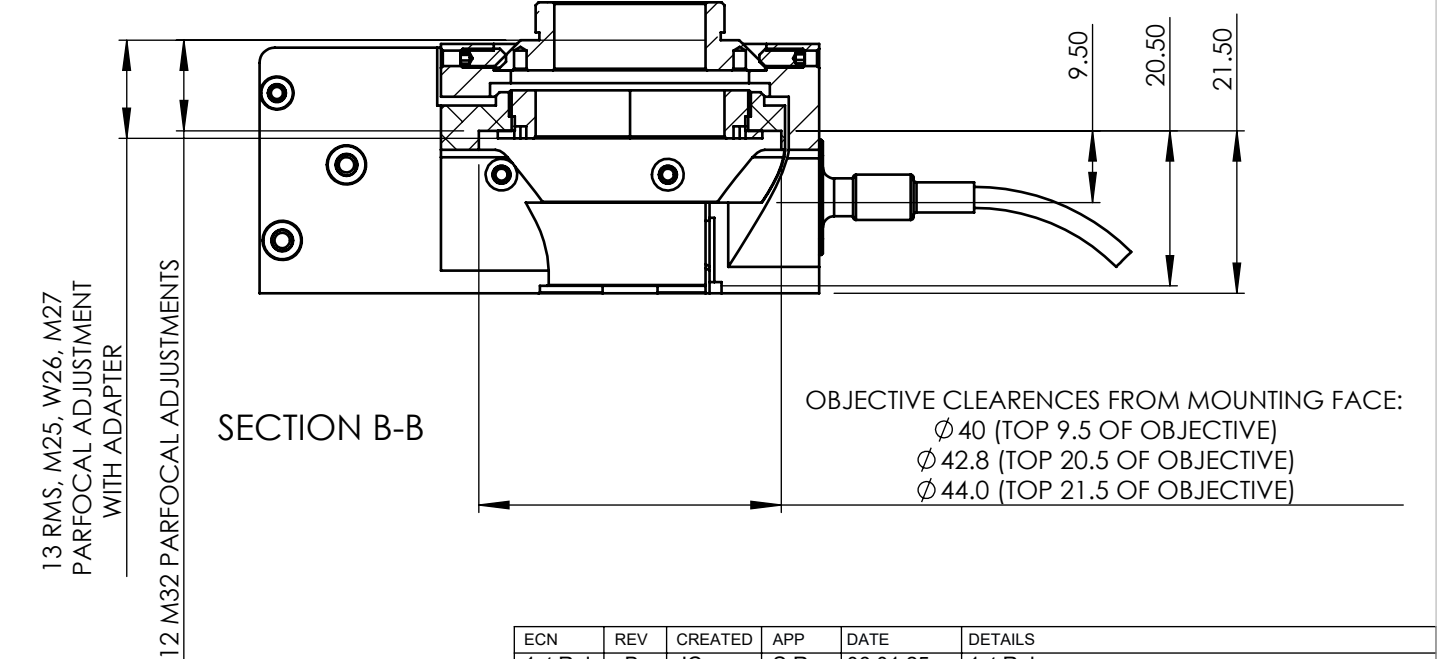


STATIC REGION



MOVING REGION

TWO MICROSCOPE ADAPTER CLAMPING GRUB SCREWS USE 1.3mm (0.050") HEX KEY. USE ONLY THE SCREWS PROVIDED.



TITLE	OP800-UP INSTALLATION DRAWING				APRVD.	S.R.	3RD ANGLE DO NOT SCALE IF IN DOUBT ASK
DRG. No.	QG-0494-IN-100006	SHEET 1 OF 1	ISS.	B	DRAWN	JC	
MATL.	STAINLESS, BRASS, ALUMINIUM				SCALE	1:1	
FINISH	CLEAN				DATE	06.01.25	
PRIOR Scientific Instruments Ltd. Fulbourn, Cambridge.							
TOLERANCE UNLESS OTHERWISE STATED \pm 0.1mm							
BREAK ALL SHARP EDGES							

ECN	REV	CREATED	APP	DATE	DETAILS
1st Rel	B	JC	S.R.	06.01.25	1st Release