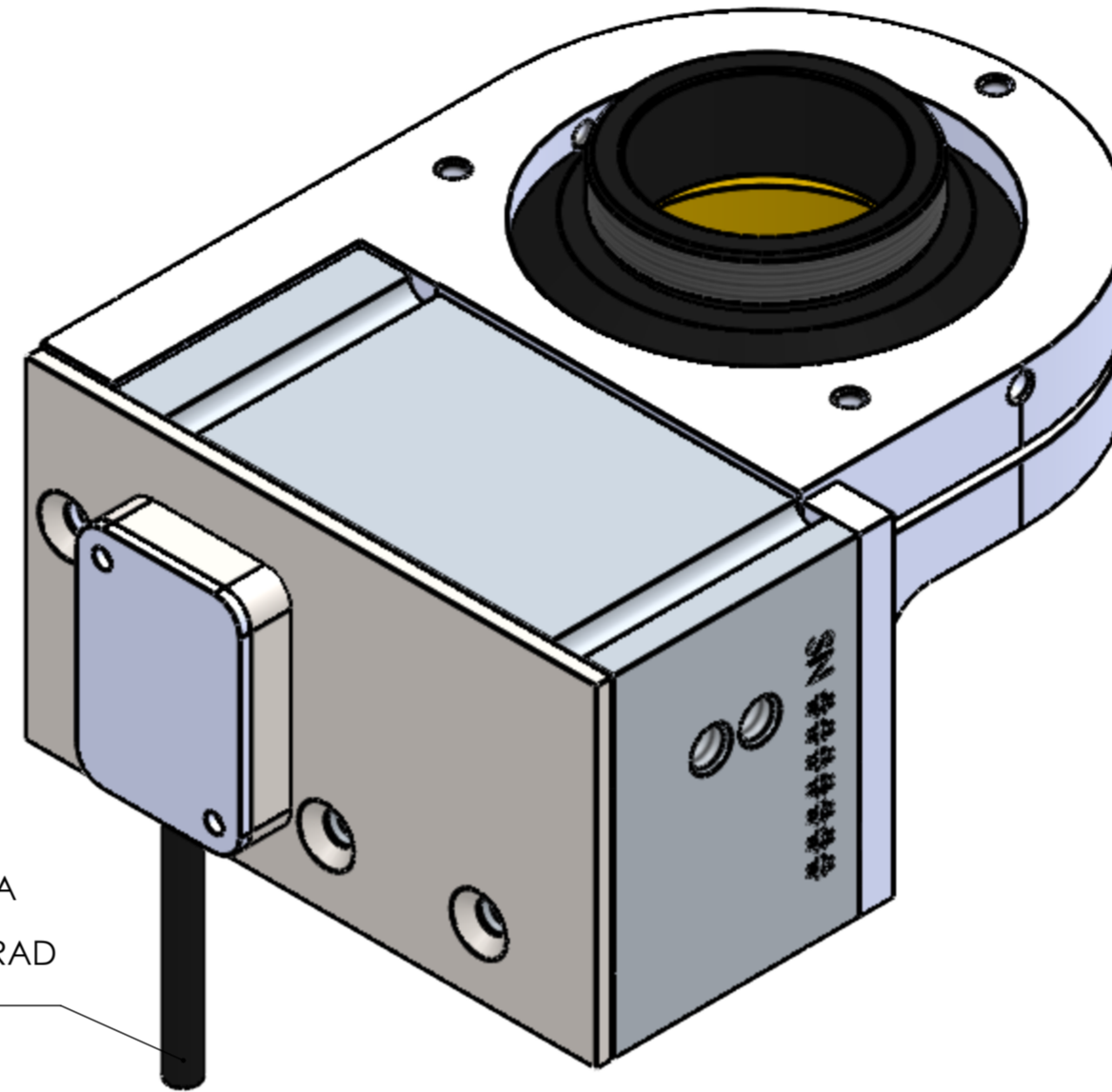


UPRIGHT ORIENTATION SHOWN



CABLE 2.8mm DIA
2M LONG
MINIMUM BEND RAD
28mm



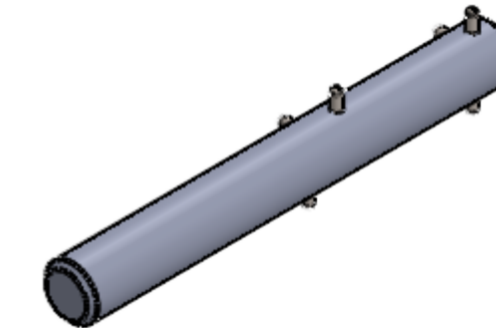
MICROSCOPE THREAD MOUNT.
SELECT THREAD TO MATCH
MICROSCOPE RMS, M25, W26,
M27 OR M32.



OBJECTIVE THREAD ADAPTER.
SELECT APPROPRIATE THREAD
TO MATCH OBJECTIVE RMS,
M25, W26 OR M27. NOT
REQUIRED FOR M32 SYSTEMS.

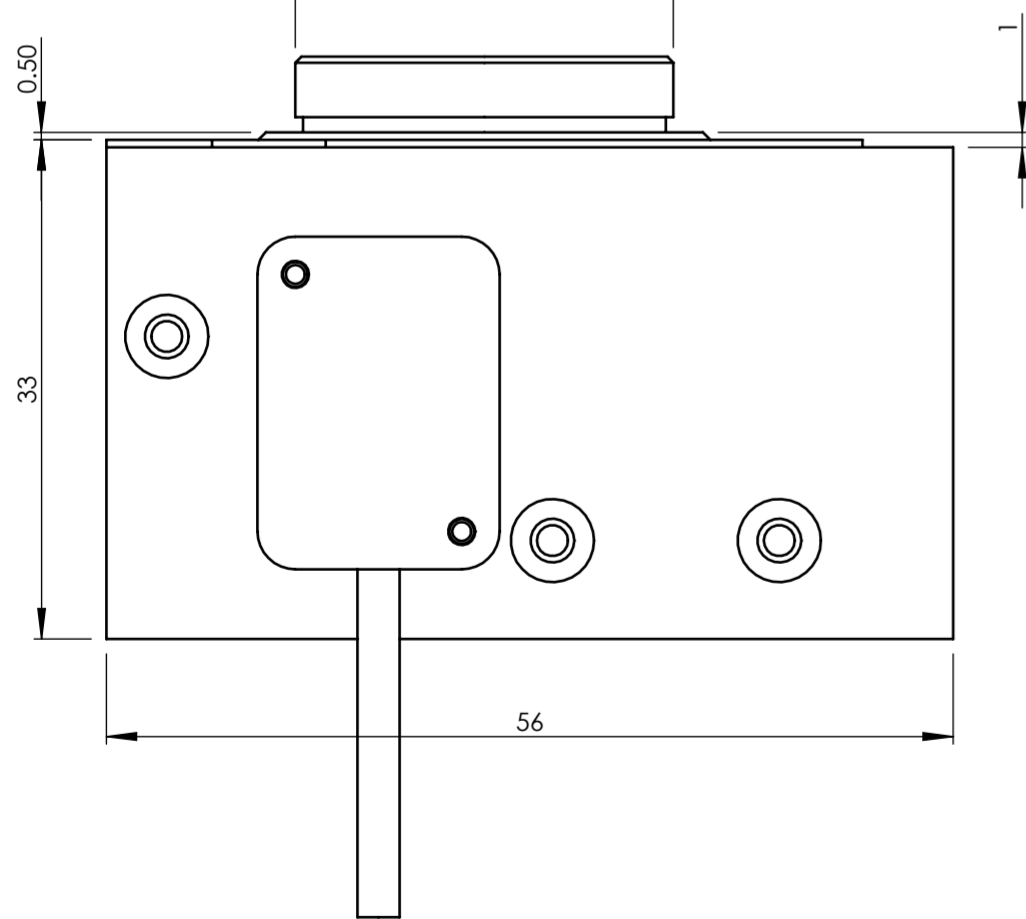


PARAFOCAL SPACERS FOR
MOVING OTHER OBJECTIVES
IN MICROSCOPE NOSE TO
THE SAME FOCAL HEIGHT RMS,
M25, W26, M27, M32. 13MM LONG
EXCEPT M32 WHICH IS 12MM

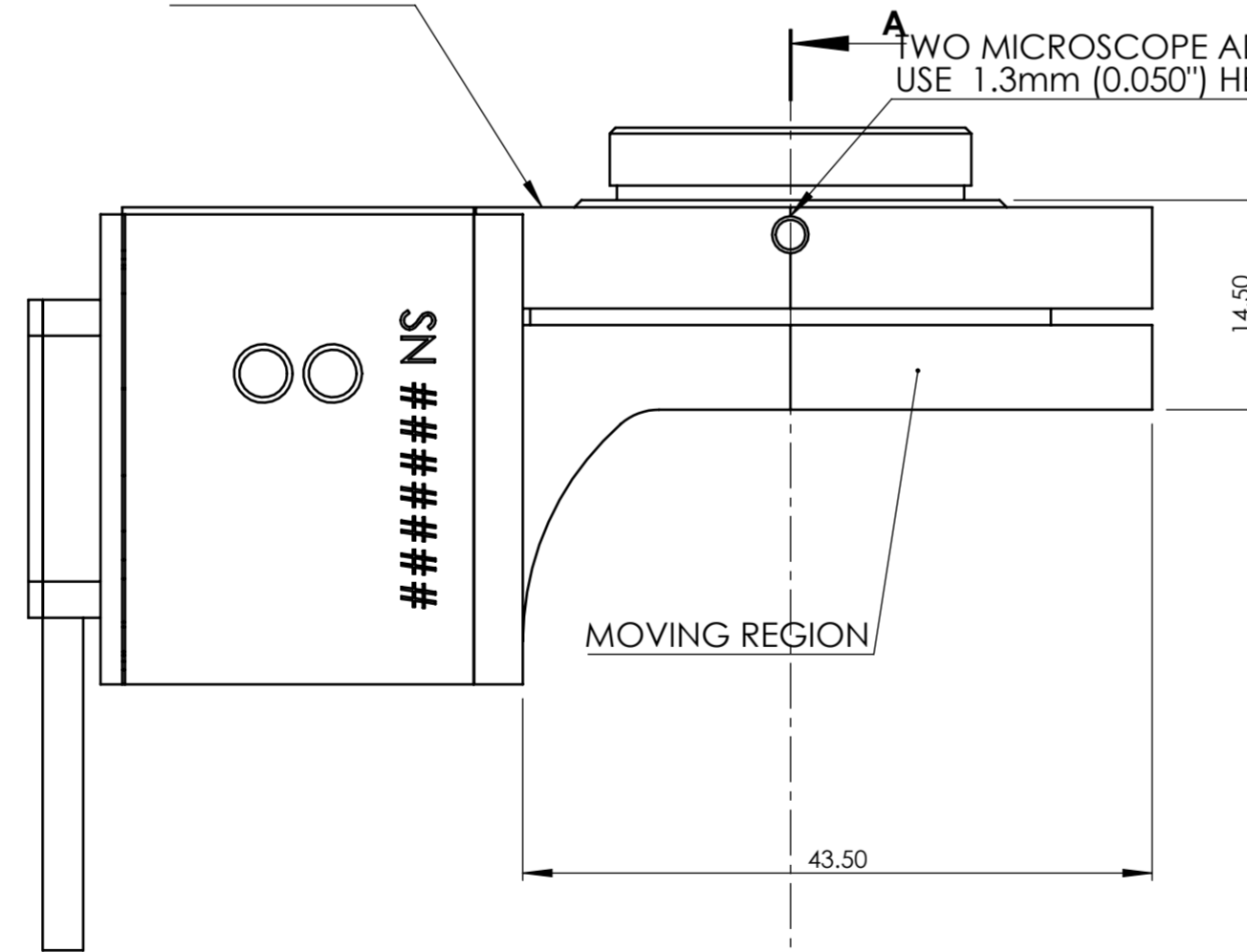


THREAD ADAPTER KEY CAN AID
INSTALLATION AND REMOVAL
OF THREAD ADAPTERS.

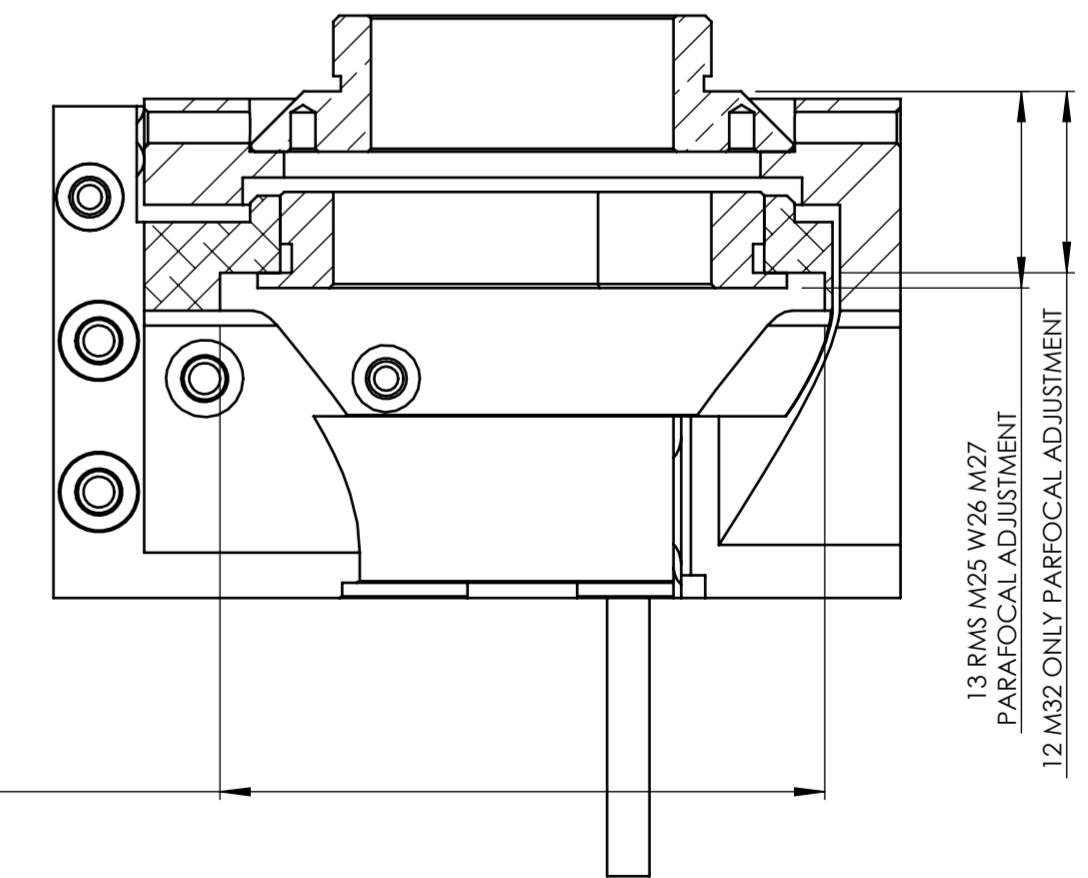
SELECT MICROSCOPE THREAD ADAPTER WITH THREAD TO SUIT MICROSCOPE
(SOLD SEPARATELY)



STATIC REGION



TWO MICROSCOPE ADAPTER CLAMPING GRUB SCREWS
USE 1.3mm (0.050") HEX KEY. USE ONLY THE SCREWS PROVIDED.



OBJECTIVE CLEARANCE
Ø 40 (TOP 9.5 OF OBJECTIVE)
Ø 42.8 (TOP 20.5 OF OBJECTIVE)
Ø 44.0 (TOP 21.5 OF OBJECTIVE)

13 RMS M25 W26 M27
PARAFOCAL ADJUSTMENT
12 M32 ONLY PARAFOCAL ADJUSTMENT

| | | | | | | | |
|--|-------------------------------|--------------|------|---|--------|----------|--|
| TITLE | INSTALLATION DRAWING | | | | APRVD. | | 3RD ANGLE DO NOT SCALE IF IN DOUBT ASK TOLERANCE UNLESS OTHERWISE STATED ±0.1mm BREAK ALL SHARP EDGES |
| DRG. No. | QGOP200 | SHEET 1 OF 1 | ISS. | A | DRAWN | J.C. | |
| MATL. | STAINLESS STEEL AND ALUMINIUM | | | | SCALE | 1:1 | |
| FINISH | | | | | DATE | 17.02.25 | |
| PRIOR Scientific Instruments Ltd. Fulbourn, Cambridge. | | | | | | | |

| ECN | REV | CREATED | APP | DATE | DETAILS |
|---------|-----|---------|-----|------|-------------|
| 1st Rel | A | J.C. | | | 1st Release |
| | | | | | |
| | | | | | |
| | | | | | |